

Thermodynamics and quantum cosmology, Part 1
Continuous topological evolution of topologically coherent defects.

R. M. Kiehn

Emeritus Professor of Physics, University of Houston
 Retired to Mazan, France
<http://www.cartan.pair.com>

Abstract

Methods of continuous topological evolution and topological thermodynamics are used to construct a cosmological model of the present universe, using the techniques based upon Cartan's theory of exterior differential systems. Thermodynamic domains, which are either Open, Closed, Isolated, or in Equilibrium, can be put into correspondence with topological systems of Pfaff topological dimension 4, 3, 2 and 1. If the environment of the universe is assumed to be a physical vacuum of Pfaff topological dimension 4, then continuous but irreversible topological evolution can cause the emergence of topologically coherent defect structures of Pfaff topological dimension less than 4. As galaxies and stars exchange radiation but not matter with the environment, they are emergent topological defects of Pfaff topological dimension 3 which are far from equilibrium. DeRham topological theory of period integrals over closed but not exact exterior differential systems leads to the emergence of quantized, deformable, but topologically coherent, macrostates at all scales. The method leads to the conjecture that dark matter and energy is represented by those thermodynamic topological defect structures of Pfaff dimension 2 or less.

1 Introduction

The primary objective of this article is to examine the continuous topological evolution of various thermodynamic systems on a cosmological scale. As a starting point, it is assumed that thermodynamic systems can be encoded by exterior differential 1-forms on a 4D variety. The environment of the universe will be considered to be a physical vacuum encoded by a differential 1-form with a Pfaff topological dimension equal to 4. A thermodynamic system of Pfaff topological dimension 4 is an Open thermodynamic system that can exchange matter

and energy with its neighbors. It is a nonequilibrium dissipative system that supports irreversible evolutionary processes.

Emphasis herein will be placed upon those processes of continuous topological evolution which cause observable stars and galaxies to emerge as metastable topological defects of Pfaff topological (not geometric) dimension 3, embedded in the very dilute cosmological, turbulent, nonequilibrium, environment of Pfaff topological dimension 4. The defect structures are topologically coherent states with properties similar to those found in "macroscopic" quantum states. Various older versions of the basic ideas may be found at [19], [20], [21]. Extensive detail can be found in [25].

A secondary objective is to update the concept of topological quantization [15], which can yield macroscopic, topologically coherent, structures on both cosmological as well as microscopic scales. The details are presented in a second article "Thermodynamics and quantum cosmology, Part II. Quantization of macroscopic topologically coherent defects."

The cosmology constructed herein is based upon continuous topological evolution of thermodynamic systems. When compared to the "bottom up" methods used to understand the universe in terms of properties deduced from the microscopic quantum world of Bose-Einstein condensates, superconductors, and superfluids [28], the cosmology herein, based upon continuous topological evolution, is a "top down" method. Both approaches are similar in that they utilize the idea that topological defects can support both microscopic and macroscopic topologically coherent (quantum) states. Thermodynamically, the "bottom up" method involves low temperature equilibrium systems, while the "top down" method is based upon nonequilibrium systems.

Stars and Galaxies are not equilibrium systems; they are radiating into the environment. They are domains of Pfaff topological dimension 3, while isolated or equilibrium systems are Pfaff topological dimension 2 or less. Topological defects of Pfaff topological dimension 3 can be far from equilibrium, and yet can have long metastable, and observable, lifetimes. The thermodynamic method suggests that "dark matter/energy" could have a mundane explanation in terms of thermodynamic states of Pfaff dimension 2 or less. Isolated or equilibrium thermodynamic domains do not exchange matter or energy with their neighbors, but could influence gravitational dynamics. This topic will be discussed later.

1.1 Motivation in terms of a Universal van der Waals gas

As will be demonstrated, an interesting cosmological model for the universe can be described in terms of a turbulent dissipative nonequilibrium very dilute (topologically universal)¹ van der Waals gas near its critical point. The motivation for treating cosmology herein from

¹Homeomorphically equivalent

point of view of topological thermodynamics is based upon remarks made in the Landau-Lifshitz volume on statistical mechanics [8]. However, the methods used in this article are not statistical, not quantum mechanical, and instead are based on Cartan's methods of exterior differential forms and their application to the topology of thermodynamic systems and their continuous topological evolution [12].

Landau and Lifshitz emphasized that real thermodynamic substances, near the thermodynamic critical point, exhibit (experimentally) extraordinary large fluctuations of density and entropy. In fact, these authors demonstrate that for an almost perfect gas near the critical point, the correlations of the fluctuations can be interpreted as a $1/r$ potential giving a $1/r^2$ force law of attraction. Hence, as a primitive cosmological model, the almost perfect gas - such as a very dilute van der Waals gas near the critical point - yields a reason for both the granularity of the night sky and for the $1/r^2$ force law ascribed to gravitational forces between massive aggregates. The topological thermodynamic methods used in this current article lead to a similar possibility: the topological defect structures of a non-equilibrium environment of Pfaff topological dimension 4 can be related to a topologically universal structure, homeomorphic (deformably equivalent) to a van der Waals gas.

It is assumed that physical thermodynamic systems can be encoded in terms of an exterior differential 1-form of Action (potentials) on a 4D variety of independent variables. A Jacobian matrix can be generated in terms of the partial derivatives of the coefficient functions that define the 1-form of Action. When expressed in terms of intrinsic variables, known as the similarity invariants, the Cayley-Hamilton 4 dimensional characteristic polynomial of the Jacobian matrix generates a universal thermodynamic phase function. Interesting topological defect structures can be put into correspondence with constraints placed upon the similarity (curvature symmetry) invariants generated by the Cayley-Hamilton 4 dimensional characteristic polynomial. These constraints define equivalence classes of topological properties.

The characteristic polynomial of the Jacobian matrix, or Phase function, can be viewed as representing a family of implicit hypersurfaces in 4D. The hypersurface has an envelope which, when further constrained to be a minimal hypersurface, is homeomorphic to the Gibbs surface of a van der Waals gas. Another, but different, topological constraint is associated with those domains for which the determinant of the Jacobian matrix is zero. This topological constraint on the characteristic polynomial leads to a cubic factor that mimics the equation of state for a van der Waals gas. Hence this universal topological method for describing a low density turbulent nonequilibrium media leads to the setting (mentioned above) examined statistically by Landau and Lifshitz in terms of classical fluctuations about the critical point.

To repeat, the model presented herein claims that nonequilibrium topological defects in

a nonequilibrium 4 dimensional medium represent the stars and galaxies, which are gravitationally attracted singularities (correlations of fluctuations of density fluctuations) of a real gas near its critical point. Note that the Cartan methods do not impose (*a priori*) a constraint of a metric, connection, or gauge, but do utilize the topological properties associated with constraints placed on the similarity invariants of the universal phase function.

Part I of this 2 part article will focus on the topological features of thermodynamic systems that can be encoded in terms of a 1-form of Action on a 4D variety, and those processes that cause defects to emerge in terms of continuous topological (not geometrical) evolution. Part II of this 2 part article will focus on the methods of (macroscopic) topological quantization in terms of emergent period integrals of closed but not exact p-forms.

What is missing in this approach (based upon the symmetric similarity invariants)? It is the anti-symmetric features of a thermodynamic systems which lead to torsion, and the source of charge and spin. In a recent development [22], a Physical Vacuum was defined in terms of a vector space of infinitesimal neighborhoods. The sole starting point of the theory resides with the functional format of a matrix Basis Frame of sixteen functions which can serve as a basis set for the vector space of infinitesimals. A question remains:

"Is there any primitive rational to choose the functional format of the Basis Frame?" It will become apparent from the current presentation that a possible primitive starting point is to substitute the Jacobian matrix (constructed from the 1-form of Action that defines a thermodynamic system) as a starting element of an equivalence class of Basis Frames.

Remark 1 *The bottom line is: The fundamental starting point for an understanding of cosmology is thermodynamics, not geometry.*

2 Topological Thermodynamics

The topological thermodynamic methods [24] used herein are based upon Cartan's theory of exterior differential forms. The topological methods offer an understanding of the cosmos which is considerably different from the geometric approach assumed by the metrical theory of general relativity. The thermodynamic view assumes that the physical systems to be studied can be encoded in terms of a 1-form of Action Potentials, A , on a 4 dimensional variety of ordered independent variables, $\{\xi^1, \xi^2, \xi^3, \xi^4\}$. The variety supports a differential volume element $\Omega_4 = d\xi^1 \wedge d\xi^2 \wedge d\xi^3 \wedge d\xi^4$. No metric, no connection, no constraint of gauge symmetry is imposed upon the 4 dimensional variety. Topological constraints will be imposed in terms of exterior differential systems [4]

In order to make the equations more suggestive to the reader, the symbolism for the variety of independent variables will be of the format $\{x, y, z, t\}$, but be aware that no constraints

of metric or connection are imposed upon this variety. For instance, it is NOT assumed that the variety is euclidean. In that which follows another useful formalism of independent variables will be constructed in terms of the ordered set of similarity invariant functions, which are given the symbols $\{X_M, Y_G, Z_A, T_K\}$. The similarity invariant functions are those deduced from the Jacobian matrix of the coefficients of that 1-form of Action, A , which is presumed to encode the thermodynamic properties of a physical system.

The 1-form of Action, A , will have components that form a covariant direction field, $A_k(x, y, z, t)$, to within a nonzero factor. Evolutionary processes will be determined in terms of 4 dimensional contravariant direction fields, $\mathbf{V}_4(x, y, z, t)$, to within a nonzero factor. Continuous topological evolution [12] will be defined in terms of Cartan's magic formula for the Lie differential, which, when acting on an exterior differential 1-form of Action, $A = A_k dx^k$, is equivalent *abstractly* to the first law of thermodynamics.

$$\text{Cartan's Magic Formula} \quad L_{(\mathbf{V}_4)}A = i(\mathbf{V}_4)dA + d(i(\mathbf{V}_4)A) \quad (1)$$

$$\text{First Law of Thermodynamics} \quad : \quad W + dU = Q, \quad (2)$$

$$\text{Inexact 1-form of Heat} \quad L_{(\mathbf{V}_4)}A = Q \quad (3)$$

$$\text{Inexact 1-form of Work} \quad W = i(\mathbf{V}_4)dA, \quad (4)$$

$$\text{Internal Energy} \quad U = i(\mathbf{V}_4)A. \quad (5)$$

In effect, Cartan's methods establish a topological basis of thermodynamics in terms of a theory of cohomology. The methods can be used to formulate precise mathematical definitions for many thermodynamic concepts in terms of topological properties - without the use of statistics or metric constraints. Moreover, the method applies to nonequilibrium thermodynamical systems and irreversible processes, again without the use of statistics or metric constraints.

2.1 The Pfaff Topological Dimension

One of the most useful topological properties that can be used with exterior differential forms is that property defined as the Pfaff topological dimension. The Pfaff topological dimension is related to the minimal number M of functions required to define the topological properties of the given form in a pregeometric variety of dimension N . Recall that it is possible to define many (simultaneous) topologies on the same set of elements. For any (or each) given exterior differential 1-form of functions, say $A = A_k(x, y, z, t)dx^k$, it is possible to construct the Pfaff sequence of terms, $\{A, dA, A \wedge dA, dA \wedge dA\}$. These elements may be used to construct a Cartan Topology (relative to the specific 1-form chosen [2]). In the Cartan topology, the exterior derivative acts as limit point generator. Hence the union of a form and its exterior derivative create the topological closure of the form [24].

For any given 1-form, the Pfaff sequence will contain M successive nonzero terms equal to or less than N , the number of geometric dimensions of the base independent variables. The number M is defined as the "Pfaff topological dimension", or class, of the given 1-form. The three important 1-forms of thermodynamics, A , W , and Q , can have different Pfaff dimensions. Suppose the 1-form of work is defined in terms of two functions as $W = PdV$. The Pfaff sequence consists of the terms $\{W, dW, 0, 0\}$; hence in this example, the Pfaff dimension of W is 2. From the first law, under the assumption that $W = PdV$,

$$Q = W + dU = PdV + dU, \quad (6)$$

$$dQ = dW = dP \wedge dV, \quad (7)$$

$$Q \wedge dQ = W \wedge dW + dU \wedge dW = 0 + dU \wedge dP \wedge dV \quad (8)$$

$$dQ \wedge dQ = 0. \quad (9)$$

Hence, a Pfaff dimension of 2 for the work 1-form can be associated with a Pfaff dimension of 3 for the Heat 1-form, unless the Pressure is a function of the internal energy and the volume. In this latter case, the Pfaff dimension of Q and W are both 2.

In this article, attention will be focused on dissipative turbulent systems with thermodynamic irreversible processes such that the Pfaff topological dimensions of A , W , and Q will be maximal and equal to 4. (The techniques can be extended to higher dimensional spaces.) These turbulent systems of Pfaff dimension 4 are not topologically equivalent to Equilibrium or Isolated systems (for which the topological dimension is 2, at most). Topological defects in the turbulent state will be associated with embedded sets of space time where the Pfaff topological dimensions are not maximal. It is remarkable that such topological defect sets can form attractors causing self organization and long lived states of Pfaff dimension 3, which are far from equilibrium. These defects are to be associated with the emergence of the observable stars and galaxies.

2.2 Physical Systems

2.2.1 Isolated, Closed and Open Systems

Physical systems and processes are elements of topological categories determined by the Pfaff topological dimension (or class) of the 1-forms of Action, A , Work, W , and Heat, Q . For example, the Pfaff topological dimension of the exterior differential 1-form of Action, A , determines the various species of thermodynamic systems in terms of distinct topological categories:

Systems : defined by the Pfaff dimension of $A = \rho A^{(0)}$

$$A \wedge dA = 0 \quad \text{Isolated - Pfaff dimension 2} \quad (10)$$

$$d(A \wedge dA) = 0 \quad \text{Closed - Pfaff dimension 3} \quad (11)$$

$$dA \wedge dA \neq 0. \quad \text{Open - Pfaff dimension 4.} \quad (12)$$

In classical thermodynamics it is often stated that isolated systems do not permit transport of energy or matter to the environment. Closed systems permit energy (radiation) transport, but not matter transport to the environment. Open systems permit both energy and matter transport to the environment. Note that these topological specifications as given above are determined entirely from the functional properties of the physical system encoded as a 1-form of Action, A . The system topological categories do not involve a process, which is assumed to be encoded by some vector direction field, \mathbf{V}_4 . The cosmological model presented herein is based on an open, Pfaff dimension 4, nonequilibrium, turbulent physical system, with internal defect structures of lesser Pfaff topological dimension acting as stars and galactic mass aggregates².

2.2.2 Equilibrium vs. Non-Equilibrium Systems

The intuitive idea for an equilibrium system comes from the experimental recognition that the intensive variables of pressure and temperature become domain constants in an equilibrium state: $dP \Rightarrow 0$, $dT \Rightarrow 0$. A definition made herein is that the Pfaff dimension of a physical system in the equilibrium state is at most 2 [3]. The Cartan topology generated by the elements of the Pfaff sequence for A is then a connected topology of one component, $\{A \neq 0, dA \neq 0, A \wedge dA = 0\}$. Although the Pfaff dimension of A is at most 2 in the equilibrium state, processes in the equilibrium state are such that the Work 1-form and the Heat 1-form must be of Pfaff dimension 1. For suppose $W = PdV$, then $dW = dP \wedge dV \Rightarrow 0$ if the pressure is a domain constant. Similarly, suppose $Q = TdS$, the $dQ = dT \wedge dS \Rightarrow 0$ if the temperature is a domain constant. Hence both W and Q are of Pfaff dimension 1 for this example.

A more stringent sufficient condition for equilibrium can be constructed in terms of the structure of the system, valid for any choice of process. For if the Pfaff dimension of the 1-form of Action is 1, then $dA \Rightarrow 0$. It follows that $W \Rightarrow 0$, hence the Pressure must vanish, and Heat 1-form is a perfect differential, $Q = d(U)$.

²Could it be that "dark matter" is simply related to those thermodynamic states which are isolated, and are of Pfaff topological dimension 2 or less?

The cosmological model proposed herein presumes that the physical vacuum is of Pfaff dimension 4, containing defect structures of Pfaff dimension 3, or less. Both non-equilibrium domains of Pfaff dimension 4 or 3 can admit processes that are thermodynamically irreversible. Extremal processes of the Hamiltonian type do not exist in domains of Pfaff topological dimension 4. The theory of continuous topological evolution indicates that embedded non equilibrium (they are radiating) topological defects of Pfaff dimension 3, can emerge in domains of Pfaff topological dimension 4 via irreversible processes. Once formed and self-organized as coherent topological attractors, the defect structures of Pfaff topological dimension 3 can continue to evolve along extremal trajectories that are not irreversibly dissipative. They can have finite lifetimes modified by topological fluctuations. In this sense, these topologically coherent defect structures are analogues of "stationary excited states" far from equilibrium.

The descriptive words of self-organized states far from equilibrium are abstracted from the intuition and conjectures of I. Prigogine [11]. However, the topological theory presented herein presents for the first time a solid formal justification (with examples) for the Prigogine conjectures. Precise definitions of equilibrium and nonequilibrium systems, as well as reversible and irreversible processes can be made in terms of the topological features of Cartan's exterior calculus. Thermodynamic irreversibility and the arrow of time are well defined in a topological sense [13], a technique that goes beyond (and without) statistical analysis.

2.2.3 Multiple Components

One of the most remarkable properties of the Cartan topology generated by a Pfaff sequence is associated with the fact that when $A \wedge dA = 0$, (Pfaff dimension 2 or less) the physical system is reducible to a single connected topological component. On the other hand when $A \wedge dA \neq 0$, (Pfaff dimension 3 or more) the physical system admits more than one topological component. The bottom line is that when the Pfaff dimension is 3 or greater (such that conditions of the Frobenius unique integrability theorem are not satisfied), solution uniqueness to the Pfaffian differential equation, $A = 0$, is lost. If there exist solutions, there is more than one. Such concepts lead to propagating discontinuities (signals), envelope solutions (Huygen wavelets), an edge of regression and lack of time reversal invariance, and the existence of irreducible affine torsion in the theory of connections. It is the opinion of this author that a dogmatic insistence on uniqueness historically has hindered the understanding of irreversibility and nonequilibrium systems.

2.3 Processes

2.3.1 Reversible and Irreversible Processes

The Pfaff topological dimension of the exterior differential 1-form of Heat, Q , determines important topological categories of processes. From classical thermodynamics "The quantity of heat in a reversible process always has an integrating factor" [6] [9] . Hence, from the Frobenius unique integrability theorem, all reversible processes are such that the Pfaff dimension of Q is less than or equal to 2. Irreversible processes are such that the Pfaff dimension of Q is greater than 2. A dissipative irreversible topologically *turbulent* process is defined when the Pfaff dimension of Q is 4.

$$\begin{aligned} \text{Processes} & : \text{ defined by the Pfaff dimension } Q \\ Q \wedge dQ & = 0 \quad \text{Reversible - Pfaff dimension 2} \end{aligned} \quad (13)$$

$$d(Q \wedge dQ) \neq 0. \quad \text{Turbulent - Pfaff dimension 4.} \quad (14)$$

Note that the Pfaff dimension of Q depends on both the choice of a process, \mathbf{V}_4 , and the system, A , upon which it acts. As reversible thermodynamic processes are such that $Q \wedge dQ = 0$, and irreversible thermodynamic processes are such that $Q \wedge dQ \neq 0$, Cartan's formula of continuous topological evolution can be used to determine if a given process, \mathbf{V}_4 , acting on a physical system, A , is thermodynamically reversible or not:

$$\left[\begin{array}{l} \text{Reversible Processes } \mathbf{V}_4 : L_{(\mathbf{V}_4)} A \wedge L_{(\mathbf{V}_4)} dA = 0, \\ \text{Irreversible Processes } \mathbf{V}_4 : L_{(\mathbf{V}_4)} A \wedge L_{(\mathbf{V}_4)} dA \neq 0. \end{array} \right] \quad (15)$$

In this article it is assumed that the cosmological background for space-time belongs to the dissipative irreversible turbulent nonequilibrium category, where the Pfaff topological dimension (or class) is maximal and equal to 4, almost everywhere, for each of the 1-forms of Action, A , Work, W , and Heat, Q . Of particular interest will be those subsets of space and time where the turbulent nonequilibrium category admits, or evolves into, topological defects such that the Pfaff topological dimension for all three 1-forms is no longer maximal and equal to 4. Remarkably, Cartan's magic formula can be used to describe the continuous dynamic possibilities of both reversible and irreversible processes, in equilibrium or nonequilibrium systems, even when the evolution induces topological change, transitions between excited states, and changes of phase, such as condensations.

It is important to note that the velocity field need not be topologically constrained such that it is singularly parameterized. That is, the evolutionary processes described by Cartan's magic formula are not necessarily restricted to vector fields that satisfy the topological constraints of kinematic perfection, $dx^k - V^k dt = 0$. A discussion of topological fluctuations and an example fluctuation process is described in the last section.

2.3.2 Adiabatic Processes - Reversible and Irreversible

The topological formulation permits a precise definition to be made for both reversible and an irreversible adiabatic processes in terms of the topological properties of Q . On a geometrical space of N dimensions, a 1-form will admit $N-1$ vector fields such that $i(V_A)Q = 0$. Such processes V_A are defined as adiabatic processes [3]. Note that adiabatic processes are defined by vector direction fields, to within an arbitrary factor, $\beta(x, y, z, t)$. That is, if $i(V_A)Q = 0$, then it is also true that $i(\beta V_A)Q = 0$. The differences between the inexact 1-forms of Work and Heat become obvious in terms of the topological format. Both 1-forms depend on the process and on the physical system. However, Work is always transversal to the process, as $i(\mathbf{V}_4)W = i(\mathbf{V}_4)i(\mathbf{V}_4)dA = 0$, but Heat is not, as $i(\mathbf{V}_4)Q = i(\mathbf{V}_4)dU \Rightarrow 0$, only for adiabatic processes.

It is not obvious that the adiabatic direction fields are such that the Pfaff dimension of Q is 2. That is, it is not obvious that Q can be written in the form, $Q = TdS$, as is possible on the manifold of equilibrium states. From the Cartan formulation it is apparent that if Q is not zero, then

$$i(\mathbf{V}_A)L_{(\mathbf{V}_A)}A = i(\mathbf{V}_A)i(\mathbf{V}_A)dA + i(\mathbf{V}_A)d(i(\mathbf{V}_A)A) \quad (16)$$

$$= 0 + i(\mathbf{V}_A)d(i(\mathbf{V}_A)A) = i(\mathbf{V}_A)Q \quad (17)$$

Hence, for an Adiabatic process:

$$\text{Adiabatic process } 0 + i(\mathbf{V}_A)d(i(\mathbf{V}_A)A) = i(\mathbf{V}_A)Q \Rightarrow 0, \quad Q \neq 0. \quad (18)$$

A reversible process is defined such that Q is less than Pfaff dimension 3, or $Q \wedge dQ = 0$. Hence $i(\mathbf{V}_A)(Q \wedge dQ) = 0$. But

$$i(\mathbf{V}_A)(Q \wedge dQ) = (i(\mathbf{V}_A)Q) \wedge dQ - Q \wedge i(\mathbf{V}_A)dQ \quad (19)$$

which permits reversible and irreversible adiabatic processes to be well defined³ when $Q \neq 0$:

$$\text{Reversible Adiabatic Process} = -Q \wedge i(\mathbf{V}_A)dQ \Rightarrow 0, \quad i(\mathbf{V}_A)Q \Rightarrow 0, \quad (20)$$

$$\text{Irreversible Adiabatic Process} = -Q \wedge i(\mathbf{V}_A)dQ \neq 0, \quad i(\mathbf{V}_A)Q \Rightarrow 0. \quad (21)$$

It is certainly true that if $L_{(\mathbf{V})}A = Q = 0$, *identically*, then all such processes are adiabatic, and reversible. In such cases, the Cartan formalism implies that $W + dU = 0$. Such

³It is apparent that $i(\mathbf{V})Q = 0$ defines an adiabatic process, but not necessarily a reversible adiabatic process. This topological point clears up certain misconceptions that appear in the literature.

systems are elements of the Hamiltonian class of processes, where $W = d\Theta$. Recall that *all* Hamiltonian processes are thermodynamically reversible. Hamiltonian processes are adiabatic when the internal energy $U = (i(V)A)$ is an evolutionary invariant.

$$\text{Hamiltonian Adiabatic Process} = L_{(\mathbf{V})}\{i(V)A\} = i(V)Q = 0, \quad (22)$$

$$W = i(V)dA = d\Theta, \quad (23)$$

$$i(V)W = 0, \quad i(V)A = U. \quad (24)$$

Note that for a given 1-form of heat, Q , it is possible to construct a matrix of N-1 null vectors, and then to compute the adjoint matrix of cofactors transposed to create the unique direction field (to within a factor), $\mathbf{V}_{NullAdjoint}$. Evolution in the direction of $\mathbf{V}_{NullAdjoint}$ does not represent an adiabatic process path, as $i(\mathbf{V}_{NullAdjoint})Q \neq 0$. For a given Q , the N-1 null vectors need not span a smooth hypersurface whose surface normal is proportional to a gradient field. The components of the 1-form may be viewed as the normal vector to an implicit hypersurface, but the implicit hypersurface is not necessarily defined as the zero set of some function.

2.3.3 Topological Torsion

For maximal, nonequilibrium, turbulent systems in space-time, the maximal element in the Pfaff sequence generated by A , W , or Q , is a 4-form. On the geometric space of 4 independent variables, every 4-form is globally closed, in the sense that its exterior derivative vanishes everywhere. It follows that every 4-form is exact and can be generated by the exterior derivative of a 3-form. The exterior derivative of the 3-form is related to the concept of a divergence of a contravariant direction (vector) field. Most of the development in this article will be devoted to the study of such 3-forms, and their kernels. It is a remarkable fact that all 3-forms admit integrating denominators, such that their exterior derivative of a rescaled 3-form is zero almost everywhere. Space time points upon which the denominator has a zero value form defect topological structures.

When the Action for a physical system is of Pfaff dimension 4, there exists a unique direction field, \mathbf{T}_4 , defined as the topological torsion 4-vector, that can be evaluated *entirely* in terms of those component functions of the 1-form of Action which define the physical system. To within a factor, this direction field⁴ has the four components of the 3-form

⁴A direction field is defined by the components of a vector field which establish the "line of action" of the vector in a projective sense. An arbitrary factor times the direction field defines the same projective line of action, just reparameterized. In metric based situations, the arbitrary factor can be interpreted as a renormalization or conformal factor.

$A \hat{d}A$, with the properties such that

$$i(\mathbf{T}_4)\Omega_4 = A \hat{d}A \quad (25)$$

$$W = i(\mathbf{T}_4)dA = \sigma A, \quad (26)$$

$$U = i(\mathbf{T}_4)A = 0, \quad (27)$$

$$Q \hat{d}Q = L_{(\mathbf{T}_4)}A \hat{L}_{(\mathbf{T}_4)}dA = \sigma^2 A \hat{d}A \quad (28)$$

$$dA \hat{d}A = 2 \sigma \Omega_4. \quad (29)$$

Hence, evolution in the direction of \mathbf{T}_4 is thermodynamically irreversible, when $\sigma \neq 0$ and A is of Pfaff dimension 4. The kernel of this vector field is defined as the zero set under the mapping induced by exterior differentiation. In engineering language, the kernel of this vector field are those point sets upon which the divergence of the vector field vanishes. The Pfaff dimension of the Action 1-form is 3 in the defect regions defined by the kernel of \mathbf{T}_4 .

For purposes of more rapid comprehension, consider a 1-form of Action, A , with an exterior differential, dA , and a notation that admits an electromagnetic interpretation ($\mathbf{E} = -\partial\mathbf{A}/\partial t - \nabla\phi$, and $\mathbf{B} = \nabla \times \mathbf{A}$)⁵. The explicit format of \mathbf{T}_4 becomes:

$$\mathbf{T}_4 = -[\mathbf{E} \times \mathbf{A} + \mathbf{B}\phi, \mathbf{A} \circ \mathbf{B}] \text{ Topological Torsion 4 vector,} \quad (30)$$

$$A \hat{d}A = i(\mathbf{T}_4)\Omega_4 \quad (31)$$

$$= T_4^x dy \hat{d}z \hat{d}t - T_4^y dx \hat{d}z \hat{d}t + T_4^z dx \hat{d}y \hat{d}t - T_4^t dx \hat{d}y \hat{d}z, \quad (32)$$

$$dA \hat{d}A = 2(\mathbf{E} \circ \mathbf{B}) \Omega_4 \quad (33)$$

$$= \{\partial T_4^x / \partial x + \partial T_4^y / \partial y + \partial T_4^z / \partial z + \partial T_4^t / \partial t\} \Omega_4. \quad (34)$$

When the divergence of the topological torsion vector is not zero, $\sigma = (\mathbf{E} \circ \mathbf{B}) \neq 0$, and A is of Pfaff dimension 4, W is of Pfaff dimension 4, and Q is of Pfaff dimension 4. The process generated by \mathbf{T}_4 is thermodynamically irreversible. The evolution of the volume element relative to the irreversible process \mathbf{T}_4 is given by the expression,

$$L(\mathbf{T}_4)\Omega_4 = i(\mathbf{T}_4)d\Omega_4 + d(i(\mathbf{T}_4)\Omega_4) \quad (35)$$

$$= 0 + d(A \hat{d}A) = 2(\mathbf{E} \circ \mathbf{B}) \Omega_4. \quad (36)$$

Hence, the differential volume element (and therefore the turbulent cosmological universe) is expanding or contracting depending on the sign and magnitude of $\mathbf{E} \circ \mathbf{B}$. In a fluid model, the coefficient $\mathbf{E} \circ \mathbf{B}$ plays the role of a bulk viscosity coefficient.

⁵The bold letter \mathbf{A} represents the first 3 components of the 4 vector of potentials, with the order in agreement with the ordering of the independent variables. The letter A represents the 1-form of Action.

If A is (or becomes) of Pfaff dimension 3, then $dA \wedge dA \Rightarrow 0$ which implies that $\sigma^2 \Rightarrow 0$, but $A \wedge dA \neq 0$. The differential volume element Ω_4 is subsequently an evolutionary invariant, and evolution in the direction of the topological torsion vector is thermodynamically reversible. The physical system is not in equilibrium, but the divergence free \mathbf{T}_4 evolutionary process forces the Pfaff dimension of W to be zero, and the Pfaff dimension of Q to be at most 1. Indeed, a divergence free \mathbf{T}_4 evolutionary process has a Hamiltonian representation. In the domain of Pfaff dimension 3 for the Action, A , the subsequent continuous evolution of the system, A , relative to the process \mathbf{T}_4 , proceeds in an energy conserving manner, representing a "stationary" or "excited" state far from equilibrium. These excited states can be interpreted as the evolutionary topological defects in the turbulent dissipative system of Pfaff dimension 4.

On a geometric domain of 4 dimensions, assume that the evolutionary process generated by \mathbf{T}_4 starts from an initial condition (or state) where the Pfaff topological dimension of A is also 4. Depending on the sign of the divergence of \mathbf{T}_4 , the process follows an irreversible path for which the divergence represents an expansion or a contraction. If the irreversible evolutionary path is attracted to a region (or state) where the Pfaff topological dimension of the 1-form of Action is 3, then $\mathbf{E} \circ \mathbf{B}$ becomes (or has decayed to) zero. The zero set of the function $\mathbf{E} \circ \mathbf{B}$ defines a hypersurface in the 4 dimensional space. If the process remains trapped on this hypersurface of Pfaff dimension 3, $\mathbf{E} \circ \mathbf{B}$ remains zero, and the \mathbf{T}_4 process becomes an extremal field. Such extremal fields are such that the virtual work 1-form vanishes, $W = i(\mathbf{T}_4)dA = 0$, and the now reversible \mathbf{T}_4 process has a Hamiltonian representation. The system is conservative in a Hamiltonian sense, but it is in an "excited" state on the hypersurface that is far from equilibrium, as the Pfaff dimension of the 1-form of Action is 3, and not 2. (Further evolution could lead to limit cycles.)

The fundamental claim made in this article is that it is these topological defects, that self organize (emerge) from the dissipative irreversible evolution of the turbulent state into "stationary metastable" states far from equilibrium, that form the stars and the galaxies of the cosmos. They are the long lived remnants or "wakes" generated from irreversible processes in the dissipative nonequilibrium turbulent medium.

3 Thermodynamic Cosmology

3.1 The Jacobian Matrix of the Action 1-form.

The idea is to express the Jacobian matrix of the coefficient functions that define the 1-form of Action, A , in terms of "universal" coordinates. These universal coordinates will be the similarity invariants of the Jacobian matrix. For a 1-form of Action of Pfaff topological

dimension 4, the Cayley-Hamilton theorem produces a Universal Phase function as a polynomial of 4th degree. What is remarkable about this Universal Phase function is that it has properties that are homeomorphically deformable into the format of a classic van der Waals gas. It is this universality that gives credence to the idea that the universe could be a nonequilibrium van der Waals gas near its critical point.

3.1.1 The Universal Characteristic Phase Function

The 1-form of Action, used to encode a physical system, contains other useful topological information, as well as geometric information. Consider the turbulent thermodynamic state generated by a 1-form of Action, A , of Pfaff topological dimension 4. The component functions of the Action 1-form can be used to construct a 4x4 Jacobian matrix of partial derivatives, $[\mathbb{J}_{jk}] = [\partial(A_j)/\partial x^k]$. In general, this Jacobian matrix will be a 4 x 4 matrix that satisfies a 4th order Cayley-Hamilton characteristic polynomial equation, $\Theta(x, y, z, t; \Psi) = 0$, where Ψ is a possibly complex order parameter with 4 perhaps complex roots ρ_k representing the complex eigenvalues of the Jacobian matrix.

$$\Theta(x, y, z, t; \Psi) = \Psi^4 - X_M \Psi^3 + Y_G \Psi^2 - Z_A \Psi^1 + T_K \Rightarrow 0. \quad (37)$$

The functions $X_M(x, y, z, t)$, $Y_G(x, y, z, t)$, $Z_A(x, y, z, t)$, $T_K(x, y, z, t)$ are the similarity invariants of the Jacobian matrix. If the eigenvalues are distinct, then the similarity invariants are given by the expressions:

$$X_M = \rho_1 + \rho_2 + \rho_3 + \rho_4, \quad (38)$$

$$Y_G = \rho_1\rho_2 + \rho_2\rho_3 + \rho_3\rho_1 + \rho_4\rho_1 + \rho_4\rho_2 + \rho_4\rho_3, \quad (39)$$

$$Z_A = \rho_1\rho_2\rho_3 + \rho_4\rho_1\rho_2 + \rho_4\rho_2\rho_3 + \rho_4\rho_3\rho_1, \quad (40)$$

$$T_K = \rho_1\rho_2\rho_3\rho_4. \quad (41)$$

The similarity invariants may be considered as a coordinate map from the original variety of independent variables, $\{x, y, z, t\} \Rightarrow \{X_M, Y_G, Z_A, T_K\}$. When the similarity invariants are treated as generalized coordinates, then the characteristic polynomial becomes a Universal Phase function, and will be used to encode universal thermodynamic properties.

3.1.2 Minimal surfaces

The Universal Phase function, Θ , may be considered as a family of hypersurfaces in the 4 dimensional space, $\{X_M, Y_G, Z_A, T_K\}$ with a complex family (order) parameter, Ψ . Moreover, it should be realized that the Universal Phase Function is a holomorphic function, $\Theta = \phi + i\chi$ in the complex variable $\Psi = u + iv$. That is

$$\Theta(X_M, Y_G, Z_A, T_K; \Psi) \Rightarrow \phi + i\chi, \quad (42)$$

where

$$\phi = u^4 - 6u^2v^2 + v^4 - X_M(u^3 - 3uv^2) + Y_G(u^2 - v^2) - Z_Au + T_K \quad (43)$$

$$\chi = 4u^3v - 4uv^3 - X_M(3u^2v - v^3) + 2Y_Guv - Z_Av. \quad (44)$$

As such, in the 4D space of two complex variables, $\{\phi + i\chi, u + iv\}$, according to the theorem of Sophus Lie, any such holomorphic function produces a pair of conjugate *minimal* surfaces in the 4 dimensional space $\{\phi, \chi, u, v\}$. It follows that there exist a sequence of maps,

$$\{x, y, z, t\} \Rightarrow \{X_M, Y_G, Z_A, T_K\} \Rightarrow \{\phi, \chi, u, v\} \quad (45)$$

such that the family of hypersurfaces can be decomposed into a pair of conjugate minimal surface components. The criteria for a minimal surface is equivalent to the idea that $X_M = 0$. By suitable renormalization, the similarity invariant X_M is equivalent to the Mean Curvature of the hypersurface.

3.2 Envelopes

The theory of implicit hypersurfaces focuses attention upon the possibility that the Universal Phase function has an envelope. The existence of an envelope depends upon the possibility of finding a simultaneous solution to the two implicit surface equations of the family:

$$\Theta(x, y, z, t; \Psi) = \Psi^4 - X_M\Psi^3 + Y_G\Psi^2 - Z_A\Psi + T_K \Rightarrow 0. \quad (46)$$

$$\partial\Theta/\partial\Psi = \Theta_\Psi = 4\Psi^3 - 3X_M\Psi^2 + 2Y_G\Psi - Z_A \Rightarrow 0. \quad (47)$$

For the envelope to be smooth, it must be true that $\partial^2\Theta/\partial\Psi^2 = \Theta_{\Psi\Psi} \neq 0$, and that the exterior 2-form, $d\Theta \wedge d\Theta_\Psi \neq 0$ subject to the constraint that the family parameter is a constant: $d\Psi = 0$. The envelope as a smooth hypersurface does not exist unless both conditions are satisfied. Recall that the envelope, if it exists, is a hypersurface in the space of similarity coordinates, $\{X_M, Y_G, Z_A, T_K\}$.

The envelope is determined by the discriminant of the Phase Function polynomial, which as a zero set is equal to a universal hypersurface in the 4 dimensional space of similarity variables $\{X_M, Y_G, Z_A, T_K\}$. This function can be written in terms of the similarity "coordinates" (suppressing the subscripts) :

Discriminant of the Universal Phase Function

$$= 18X^3ZYT - 27Z^4 + Y^2X^2Z^2 - 4Y^3X^2T + 144YX^2T^2 \quad (48)$$

$$+ 18XZ^3Y - 192XZT^2 - 6X^2Z^2T + 144TZ^2Y - 4X^3Z^3 \quad (49)$$

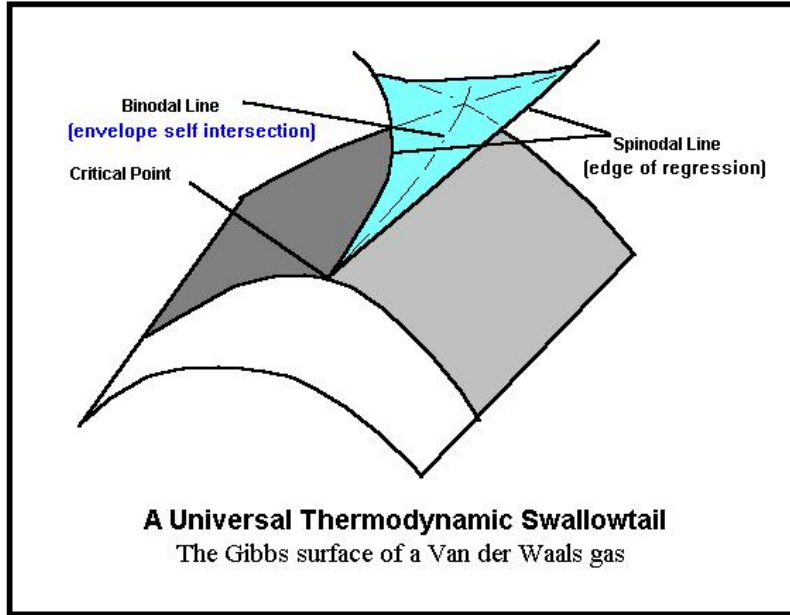
$$- 27X^4T^2 - 4Y^3Z^2 + 16Y^4T - 128Y^2T^2 + 256T^3 - 80XZY^2T. \quad (50)$$

The discriminant has eliminated the family order parameter. Remarkably, if the linear similarity invariant related to the Mean Curvature is set to zero, $X_M \Rightarrow 0$, then the constrained discriminant describes a universal swallow tail surface homeomorphic (deformable) to the Gibbs surface (see the figure below) of a van der Waals gas (subscripts suppressed):

$$\text{Universal Gibbs Swallowtail Envelope } (X = 0, Y, Z, T) \quad (51)$$

$$= -27Z^4 + 144TZ^2Y - 4Y^3Z^2 + 16Y^4T - 128Y^2T^2 + 256T^3 \Rightarrow 0. \quad (52)$$

In other words, the Gibbs function for a van der Waals gas is a universal idea associated with minimal hypersurfaces, $X_K = 0$, of thermodynamic systems of Pfaff topological dimension 4. The similarity coordinate T_K plays the role of the Gibbs free energy, in terms of the Pressure ($\sim Z_A$) and the Temperature ($\sim Y_G$). The Spinodal line as a limit of phase stability, and the critical point are ideas that come from the study of a van der Waals gas, but herein it is apparent that these concepts are universal topological concepts that remain invariant with respect to deformations. The universal formulas for such constraints are presented in the next section. The result is that all thermodynamic systems of Pfaff topological dimension 4 are deformably equivalent to a van der Waals gas.



It is important to recognize that the development of a universal nonequilibrium van der Waals gas has not utilized the concepts of metric, connection, statistics, relativity, gauge symmetries, or quantum mechanics.

3.2.1 The Edge of Regression and Self Intersections

The envelope is smooth as long as $\partial^2\Theta/\partial\Psi^2 = \Theta_{\Psi\Psi} \neq 0$, and $d\Theta^{\wedge}d\Theta_{\Psi} \neq 0$, subject to the further constraint that the family parameter is a constant: $d\Psi = 0$. If $d\Theta^{\wedge}d\Theta_{\Psi} \neq 0$, but $\Theta_{\Psi\Psi} = 0$, then the envelope has a self intersection singularity. If $d\Theta^{\wedge}d\Theta_{\Psi} = 0$, but $\Theta_{\Psi\Psi} \neq 0$, there is no self intersection, and no envelope.

If the envelope exists, further singularities are determined by the higher order partial derivatives of the Universal Phase function with respect to Ψ .

$$\partial^2\Theta/\partial\Psi^2 = \Theta_{\Psi\Psi} = 12\Psi^2 - 6X_M\Psi + 2Y_G. \quad (53)$$

$$\partial^3\Theta/\partial\Psi^3 = \Theta_{\Psi\Psi\Psi} = 24\Psi - 6X_M \quad (54)$$

When $\partial^3\Theta/\partial\Psi^3 = \Theta_{\Psi\Psi\Psi} \neq 0$, and $d\Theta^{\wedge}d\Theta_{\Psi}^{\wedge}d\Theta_{\Psi\Psi} \neq 0$, the envelope terminates in a edge of regression. The edge of regression is determined by the simultaneous solution of $\Theta = 0$, $\Theta_{\Psi} = 0$ and $\Theta_{\Psi\Psi} = 0$. For the minimal surface representation of the Gibbs surface for a van der Waals gas, the edge of regression defines the Spinodal line of ultimate phase stability. The edge of regression is evident in the Swallowtail figure (above) describing the Gibbs function for a van der Waals gas.

If $\Theta_{\Psi\Psi} = 0$, then for $X_M = 0$, it follows that $Y_G = 0$, $Z_A = 0$, $T_K = 0$, which defines the critical point of the Gibbs function for the van der Waals gas. In other words, the critical point is the zero of the 4-dimensional space of similarity coordinates.

If $\Theta_{\Psi\Psi} = 0$, then for $X_M = 0$ the envelope has a self intersection. It follows from $\Theta_{\Psi\Psi} = 0$, that $\Psi^2 = -Y_G/6$, which when substituted into

$$\Theta_{\Psi} = 4\Psi^3 + 2Y_G\Psi - Z_A \Rightarrow 0, \quad (55)$$

yields the

$$\text{Universal Gibbs Edge of Regression: } Z_A^2 + Y_G^3(8/27) = 0, \quad (56)$$

which defines the Spinodal line, of the minimal surface representation for a universal non-equilibrium van der Waals gas, in terms of "similarity" coordinates.

Within the swallow tail region the "Gibbs" surface has 3 real roots and outside the swallow tail region there is a unique real root. The edge of regression furnished by the Cardano function defines the transition between real and imaginary root structures. The details of the universal nonequilibrium van der Waals gas in terms of envelopes and edges of regression with complex molal densities or order parameters will be presented elsewhere. These systems are not equilibrium systems for the Pfaff dimension is not 2. Of obvious importance is the idea that the a zero value for both Z_G and T_K are required to reduce the Pfaff dimension to 2, which is the necessary condition for an isolated or equilibrium system.

3.3 Ginsburg Landau Currents

The Universal Phase function can be solved for the determinant of the Jacobian matrix, which is equal to the similarity invariant T_K ,

$$T_K = -\{\Psi^4 - X_M\Psi^3 + Y_G\Psi^2 - Z_A\Psi\}. \quad (57)$$

All determinants are, in effect, N - forms on the domain of independent variables. All N-forms can be related to the exterior derivative of some N-1 form or current, J . Hence

$$dJ = K\Omega_4 = \text{div}\mathbf{J} + \partial\rho/\partial t = -(\Psi^4 - X_M\Psi^3 + Y_G\Psi^2 - Z_A\Psi)\Omega_4. \quad (58)$$

For currents of the form

$$\mathbf{J} = \text{grad } \Psi, \quad (59)$$

$$\rho = \Psi, \quad (60)$$

the Universal Phase function generates the universal Ginsburg Landau equations

$$\nabla^2\Psi + \partial\Psi/\partial t = -(\Psi^4 - X_M\Psi^3 + Y_G\Psi^2 - Z_A\Psi), . \quad (61)$$

and establishes contact with the "bottom up" methods.

3.4 Singularities as defects of Pfaff dimension 3

The family of hypersurfaces can be topologically constrained such that the topological dimension is reduced, and/or constraints can be imposed upon functions of the similarity variables forcing them to vanish. Such regions in the 4 dimensional topological domain indicate topological defects or thermodynamic changes of phase. It is remarkable that for a given 1-form of Action there are an infinite number rescaling functions, λ , such that the Jacobian matrix $[\mathbb{J}_{jk}^{scaled}] = [\partial(A/\lambda)_j/\partial x^k]$ is singular (has a zero determinant). For if the coefficients of any 1-form of Action are rescaled by a divisor generated by the Holder norm,

$$\text{Holder Norm: } \lambda = \{a(A_1)^p + b(A_2)^p + c(A_3)^p + e(A_4)^p\}^{m/p}, \quad (62)$$

then the rescaled Jacobian matrix

$$[\mathbb{J}_{jk}^{scaled}] = [\partial(A/\lambda)_j/\partial x^k] \quad (63)$$

will have a zero determinant, for any index p, any set of isotropy or signature constants, a, b, c, e, if the homogeneity index is equal to unity: $m = 1$. This homogeneous constraint implies that the similarity invariants become projective invariants, not just equi-affine invariants. Such species of topological defects can have the image of a 3-dimensional implicit characteristic hypersurface in space-time:

$$\text{Singular hypersurface in 4D: } \det[\partial(A/\lambda)_j/\partial x^k] \Rightarrow 0 \quad (64)$$

The singular fourth order Cayley-Hamilton polynomial of $[\mathbb{J}_{jk}]$ then will have a cubic polynomial factor with one zero eigenvalue.

For example, consider the simple case where the determinant of the Jacobian vanishes: $T_K \Rightarrow 0$. Then the Phase function becomes

$$\text{Universal Equation of State : } \Theta(\{X_M, Y_G, Z_A, T_K = 0\}; \Psi) \quad (65)$$

$$= \Psi(\Psi^3 - X_M\Psi^2 + Y_G\Psi - Z_A) \Rightarrow 0. \quad (66)$$

The space has been topologically reduced to 3 dimensions (one eigen value is zero), and the zero set of the resulting singular Universal Phase function becomes a universal cubic equation that is homeomorphic to the cubic equation of state for a van der Waals gas.

When the rescaling factor λ is chosen such that $p = 2, a = b = c = 1, m = 1$, then the Jacobian matrix, $[\mathbb{J}_{jk}]$, is equivalent to the "Shape" matrix for an implicit hypersurface in the theory of differential geometry. Recall that the homogeneous similarity invariants can be put into correspondence with the linear Mean curvature, $X_M \Rightarrow C_M$, the quadratic Gauss curvature, $Y_G \Rightarrow C_G$, and the cubic Adjoint curvature, $Z_A \Rightarrow C_A$, of the hypersurface. The characteristic cubic polynomial can be put into correspondence with a nonlinear extension of an ideal gas *not necessarily* in an equilibrium state.

3.5 The Universal van der Waals gas

More than 100 years ago van der Waals introduced into the science of thermodynamics the equation of state now called the van der Waals gas:

$$P = \rho RT / (1 - b\rho) + a\rho^2 \quad (67)$$

The van der Waals equation may be considered as a cubic constraint on the space of variables $\{n; P, V, T\}$ where $\rho = n/V$ is defined as the molar density.

$$\rho^3 - (1/b)\rho^2 + \{-(RT + bP)/ab\}\rho + P/ab = 0. \quad (68)$$

This cubic equation is to be compared with the characteristic polynomial written in terms of the similarity invariants, M , G , and A . Note that the roots of the characteristic polynomial are not necessarily real. This observation leads to a well defined procedure for treating nonequilibrium thermodynamics systems as complex deviations from the real, or equilibrium, systems. The reality condition is determined by the Cardano function that describes an edge of regression discontinuity.

For a transformation such that

$$(8T + P)/3 = Y_G / (M/3)^2, \quad (69)$$

$$P = Z_K / (M/3)^3, \quad (70)$$

$$\lambda = -\rho / (M/3), \quad (71)$$

the characteristic polynomial becomes an equation in terms of dimensionless parameters,

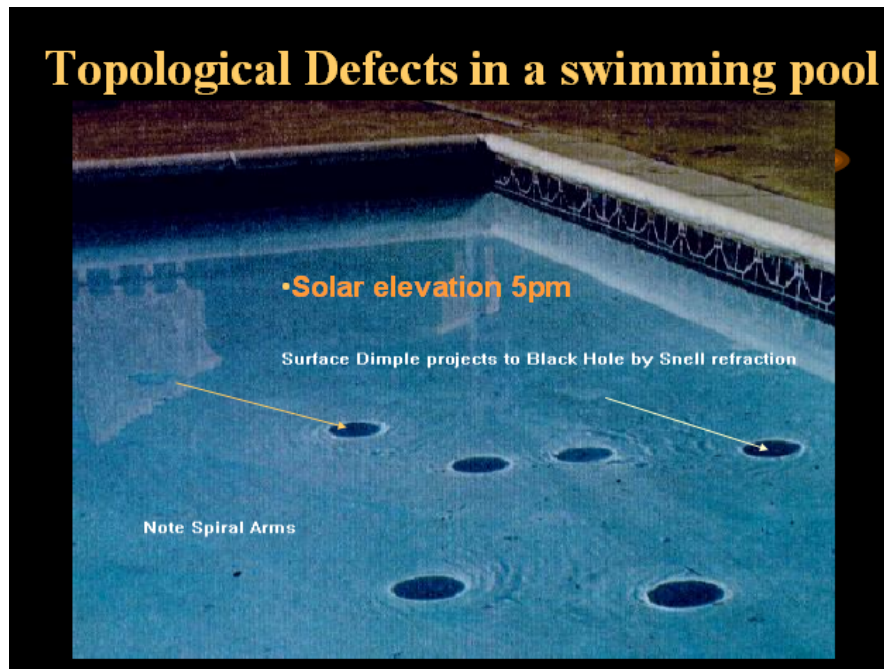
$$U(\lambda, T, P) = (\lambda)^3 - 3(\lambda)^2 + [(8T + P)/3](\lambda) - P = 0. \quad (72)$$

The last format given above is to be recognized as the Equation of State of a van der Waals Gas (compare to 65), in terms of dimensionless Pressure, Temperature relative to their values at the critical point.

4 The Falaco Cosmological Soliton

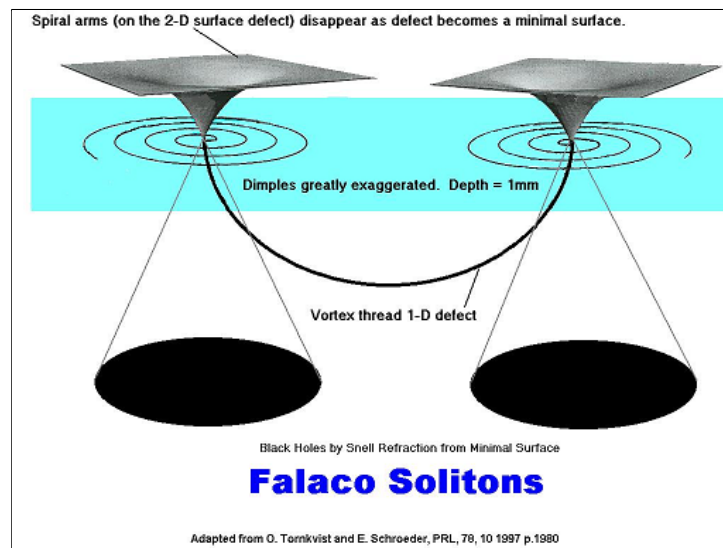
Although of importance to the cosmological concept of a universe expressible as a low density (nonequilibrium) van der Waals gas near its critical point, the factorization of the Jacobian characteristic polynomial into a cubic is not the only cosmological possibility. Of particular interest is the factorization that leads to a Hopf bifurcation. In this case the characteristic determinant vanishes, the Adjoint cubic curvature vanishes, the mean curvature vanishes (indicating a minimal surface), but the Gauss curvature is positive, and the two remaining eigenvalues of the characteristic polynomial are pure imaginary conjugates. Such results indicate rotations or oscillations (as in the chemical Brusselator reactions) and the possibility of spiral concentration or density waves on such minimal surfaces. Such structures at a cosmological level would appear to explain the origin of spiral arm galaxies. The Hopf type minimal surfaces of positive Gauss curvature do not represent thermodynamic equilibrium systems, for their curvatures, although two in number, are pure imaginary. The molal density distributions (or order parameters) are complex.

Evidence of such topological defects (at the macroscopic level) can be demonstrated by the creation of Falaco Solitons in a swimming pool [16] [25].



These experiments demonstrate that such topological defects are available at all scales. The Falaco Solitons consist of spiral "vortex defect" structures (analogous to CGL theory) on a two dimensional minimal surface, one at each end of a 1-dimensional "vortex line" or

thread (analogous to GPG theory). Remarkably the topological defect surface structure is locally unstable, as the surface is of negative Gauss curvature. Yet the pair of locally unstable 2-D surfaces is *globally* stabilized by the 1-D line defect attached to the "vertex" points of the minimal surfaces. It is remarkable to me that the Falaco Solitons are obvious repeatable experimental examples of "strings connected to branes", yet no string theorist that I have challenged to show how his string "theory" describes the emergence of Falaco Solitons has responded with a solution. My view is that I hold the fanciful claims of string theory suspect, until those theorists can demonstrate a solution that describes the experimental Falaco Solitons.



For some specific physical systems it can be demonstrated that period (circulation) integrals of the 1-form of Action potentials, A , lead to the concept of "vortex defect lines". The idea is extendable to "twisted vortex defect lines" in three dimensions. The "twisted vortex defects" become the spiral vortices of a Complex Ginsburg Landau (CGL) theory, while the "untwisted vortex lines" become the defects of Ginzburg-Pitaevskii-Gross (GPG) theory [23]. In my opinion, it is unfortunate that the word "vortex" has been used so glibly in such descriptive phrases. To a fluid dynamicist, the concept of a vortex implies the existence of vorticity (curl of the velocity field). Circulation is a fluid property independent from the existence of vorticity. I suggest that the descriptions "Vortex defect lines" should be made more precise in terms of the phrase "Circulation defect lines".

In the macroscopic domain, the fluid experiments visually indicate the emergence of "almost flat" spiral arm structures during the formative stages of the Falaco solitons. In the cosmological domain, it is suggested that these universal topological defects represent the ubiquitous "almost flat" spiral arm galaxies. Based on the experimental creation of Falaco

Solitons in a swimming pool, it has been conjectured that M31 and the Milky Way galaxies could be connected by a topological defect thread [16]. Only recently has photographic evidence appeared suggesting that galaxies may be connected by strings.



At the other extreme, the rotational minimal surfaces⁶ which form the two endcaps of the Falaco soliton, like quarks, apparently are confined by the string. If the string (whose "tension" induces global stability of the unstable endcaps) is severed, the endcaps (like unconfined quarks in the elementary particle domain) disappear (in a nondiffusive manner). In the microscopic electromagnetic domain, the Falaco soliton structure offers an alternate, topological, pairing mechanism on a Fermi surface, that could serve as an alternate to the Cooper pairing in superconductors.

5 The Adjoint Current and Topological Spin

From the singular Jacobian matrix, $[\mathbb{J}_{jk}^{scaled}] = [\partial(A/\lambda)_j/\partial x^k]$, it is always possible to construct the Adjoint matrix as the matrix of cofactors transposed:

$$\text{Adjoint Matrix : } [\widehat{\mathbb{J}}^{kj}] = \text{adjoint} [\mathbb{J}_{jk}^{scaled}] \quad (73)$$

When this matrix is multiplied times the rescaled covector components, the result is the production of an adjoint current,

⁶In euclean 3-space such minimal surfaces have a negative Gauss curvature, but in Minkowski 3 space they have positive Gauss curvature.

$$\text{Adjoint current : } |\widehat{\mathbf{J}}^k\rangle = [\widehat{\mathbb{J}}^{kj}] \circ |\mathbf{A}_j/\lambda\rangle \quad (74)$$

It is remarkable that the construction is such that the Adjoint current 3-form, if not zero, has zero divergence globally:

$$\widehat{J} = i(\widehat{\mathbf{J}}^k)\Omega_4 \quad (75)$$

$$d\widehat{J} = 0. \quad (76)$$

From the realization that the Adjoint matrix may admit a nonzero globally conserved 3-form density, or current, \widehat{J} , it follows abstractly that there exists a 2-form density of "excitations", \widehat{G} , such that

$$\text{Adjoint current : } \widehat{J} = d\widehat{G}. \quad (77)$$

\widehat{G} is not uniquely defined in terms of the adjoint current, for \widehat{G} could have closed components (gauge additions \widehat{G}_c , such that $d\widehat{G}_c = 0$), which do not contribute to the current, \widehat{J} .

From the topological theory of electromagnetism [14] [18] there exists a fundamental 3-form, $A^{\wedge}G$, defined as the "topological Spin" 3-form,

$$\text{Topological Spin 3-form : } A^{\wedge}G. \quad (78)$$

The exterior derivative of this 3-form produces a 4-form, with a coefficient energy density function that is composed of two parts:

$$d(A^{\wedge}G) = F^{\wedge}G - A^{\wedge}\widehat{J}. \quad (79)$$

The first term is twice the difference between the "magnetic" and the "electric" energy density, and is a factor of 2 times the Lagrangian usually chosen for the electromagnetic field in classic field theory:

$$\text{Lagrangian Field energy density : } F^{\wedge}G = \mathbf{B} \circ \mathbf{H} - \mathbf{D} \circ \mathbf{E} \quad (80)$$

The second term is defined as the "interaction energy density"

$$\text{Interaction energy density : } A^{\wedge}\widehat{J} = \mathbf{A} \circ \widehat{\mathbf{J}} - \rho\phi. \quad (81)$$

For the special (Gauss) choice of integrating denominator, λ with ($p = 2, a = b = c = 1, m = 1$) it can be demonstrated that the Jacobian similarity invariants are equal to the classic curvatures:

$$\{X_M, Y_G, Z_A, T_K\} \Rightarrow \{C_{M(\text{mean_linear})}, C_{G(\text{gauss_quadratic})}, C_{A(\text{adjoint_cubic})}, 0\}. \quad (82)$$

It can be demonstrated that the interaction density is exactly equal to the Adjoint curvature energy density:

$$\text{Interaction energy } A \hat{J} = C_A \Omega_4 \quad (\text{The Adjoint Cubic Curvature}). \quad (83)$$

The conclusion reached is that a nonzero interaction energy density implies the thermodynamic system is not in an equilibrium state.

However, it is always possible to construct the 3-form, \hat{S} :

$$\text{Topological Spin 3-form : } \hat{S} = A \hat{G} \quad (84)$$

The exterior derivative of this 3-form leads to a co-homological structural equation similar the first law of thermodynamics, but useful for nonequilibrium systems. This result, now recognized as a statement applicable to nonequilibrium thermodynamic processes, was defined as the "Intrinsic Transport Theorem" in 1969 [17] :

$$\text{Intrinsic Transport Theorem (Spin) : } d\hat{S} = F \hat{G} - A \hat{J}, \quad (85)$$

$$\text{First Law of Thermodynamics (Energy) : } dU = Q - W \quad (86)$$

If one considers a collapsing system, then the geometric curvatures increase with smaller scales. If Gauss quadratic curvature, C_G , is to be related to gravitational collapse of matter, then at some level of smaller scales a term cubic in curvatures, C_H , would dominate. It is conjectured that the cubic curvature produced by the interaction energy effect described above could prevent the collapse to a black hole. Cosmologists and relativists apparently have ignored such cubic curvature effects.

6 Topological Fluctuations

Topological fluctuations are admitted when the evolutionary vector direction fields are not singly parametrized:

$$\text{Fluctuations in position (pressure) : } d\mathbf{x} - \mathbf{v}dt = \Delta\mathbf{x} \neq 0 \quad (87)$$

$$\text{Fluctuations in velocity (temperature) : } d\mathbf{v} - \mathbf{a}dt = \Delta\mathbf{v} \neq 0 \quad (88)$$

$$\text{Fluctuations in momenta (viscosity) : } d\mathbf{p} - \mathbf{f}dt = \Delta\mathbf{p} \neq 0. \quad (89)$$

These failures of kinematic perfection undo the topological refinements imposed by a "kinematic particle" point of view, and place emphasis on the continuum methods inherent in

fluids and plasmas. For example, consider the Cartan-Hilbert 1-form of Action on a space of $3n+1$ independent variables (the p_μ are presumed to be independent Lagrange multipliers):

$$A = L(\mathbf{x}, \mathbf{v}, t)dt + p_\mu(dx^\mu - v^\mu dt) = L(x, v, t)dt + p_\mu \Delta x^\mu \quad (90)$$

The Top Pfaffian in the Pfaff sequence is

$$(dA)^{n+1} = (n+1)! \{ \sum_{\mu=1}^n (\partial L / \partial v^\mu - p_\mu) \bullet d\mathbf{v}^\mu \} \wedge dp_1 \wedge \dots \wedge dp_n \wedge dq^1 \wedge \dots \wedge dq^n \wedge dt, \quad (91)$$

and yields a Pfaff dimension of $2n+2$ for the 1-form of Action, defined on the geometric space of $3n+1$ variables $\{x^\mu, p_\mu, v^\mu, t\}$. This even dimensional space defines a symplectic manifold.

For the maximal noncanonical symplectic physical system of Pfaff dimension $2n+2$, consider evolutionary processes to be representable by vector fields of the form $\gamma V_{3n+1} = \gamma\{\mathbf{v}, \mathbf{a}, \mathbf{f}, 1\}$, relative to the independent variables $\{\mathbf{x}, \mathbf{v}, \mathbf{p}, t\}$. Define the "virtual work" 1-form, W , as $W = i(\mathbf{W})dA$, a 1-form which must vanish for the extremal case, and be nonzero, but closed, for the symplectic case. For any n , it may be shown by direct computation that the virtual work 1-form consists of two distinct terms, each involving a different fluctuation:

$$W = \{\mathbf{p} - \partial L / \partial \mathbf{v}\} \bullet \Delta \mathbf{v} + \{\mathbf{f} - \partial L / \partial \mathbf{x}\} \bullet \Delta \mathbf{x} \quad (92)$$

When the fluctuations in velocity are zero (temperature) and the fluctuations in position are zero (pressure), then the work 1-form will vanish, and the process and physical system admits a Hamiltonian representation. On the other hand if the fluctuations in velocity are not zero and the fluctuations in position are not zero, then the Work 1-form vanishes only if the momenta (the Lagrange multipliers, \mathbf{p} , are canonically defined ($\{\mathbf{p} - \partial L / \partial \mathbf{v}\} \Rightarrow 0$) and the Newtonian force is a gradient, $\{\mathbf{f} - \partial L / \partial \mathbf{x}\} \Rightarrow 0$. These topological constraints are ubiquitously assumed in classical mechanics.

When $\Delta x^k \Rightarrow 0$, such that all topological fluctuations vanish, then the Pfaff dimension of the physical system defined in terms of the Cartan-Hilbert 1-form of Action, A , is 2 (the equilibrium requirement).

7 Examples

In order to demonstrate content to the thermodynamic topological theory, two algebraically simple examples are presented below. The first corresponds to a Jacobian characteristic equation that has a cubic polynomial factor, and hence can be identified with a van der Waals gas. The second example exhibits the features associated with a Hopf bifurcation,

where the characteristic equation has a quadratic factor with two pure imaginary roots, and two null roots. Another example, given in [25], [13], demonstrates how a bowling ball, given initial angular momentum and energy, skids and/or slips changing its angular momentum and kinetic energy irreversibly via friction effects, until the dynamics is such that the ball rolls with out slipping. Once that "excited" state is reached, and topological fluctuations are ignored, the motion continues without dissipation. The system is in an excited state far from equilibrium.

7.1 Example 1: van der Waals properties from rotation and contraction

In this example, the Action 1-form is presumed to be of the form

$$A_0 = a(ydx - xdy) + b(tdz + zdt). \quad (93)$$

The 1-form of Potentials depends on the coefficients a and b . The results of the topological theory are (for $r^2 = x^2 + y^2 + z^2 + t^2$):

$$\text{Mean curvature} : C_M = -2btz/(r^2)^{3/2} \quad (94)$$

$$\text{Gauss curvature} : C_G = -\{b^2(x^2 + y^2) - a^2(z^2 + t^2)\}/(r^2)^2 \quad (95)$$

$$\text{Adjoint curvature} : C_A = A \wedge J_s = -2a^2btz/(r^2)^{5/2} \quad (96)$$

$$\text{Top_Torsion} = 2ab \cdot [0, 0, z, -t]/(r^2) \quad (97)$$

$$\text{Adjoint Current} : J_s = (a^2b^2 \cdot [x, y, z, t]) / (r^2)^2 \quad (98)$$

$$\text{Pfaff Dimension 4} : dA \wedge dA = 2ba(t^2 - z^2)/(r^2)^2 \Omega_4 \quad (99)$$

The Jacobian matrix has 1 zero eigen value and three nonzero eigenvalues. Hence, the cubic polynomial will yield an interpretation as a van der Waals gas. The Adjoint current represents a contraction in space-time, while the flow associated with the 1-form has a rotational component about the z axis.

7.2 Example 2: A Hopf 1-form

In this example, the Hopf 1-form is presumed to be of the form

$$A_0 = a(ydx - xdy) + b(tdz - zdt). \quad (100)$$

The 1-form of Potentials depends on the coefficients a and b . There are two cases corresponding to left and right handed "polarizations": $a = b$ or $a = -b$. The results of the

topological theory are (for $r^2 = x^2 + y^2 + z^2 + t^2$):

$$\text{Mean curvature} : C_M = 0, \quad (101)$$

$$\text{Gauss curvature} : C_G = \{b^2(x^2 + y^2) + a^2(z^2 + t^2)\}/(r^2)^2 \quad (102)$$

$$\text{Adjoint Cubic curvature} : C_A = A \wedge J_s = 0 \quad (103)$$

$$\text{Top_Torsion} = 2ab \cdot [x, y, z, t]/(r^2) \quad (104)$$

$$\text{Adjoint Current} : J_s = (ab/2) \cdot \text{Top_Torsion} \quad (105)$$

$$\text{Pfaff Dimension 4} : dA \wedge dA = 4ab/(r^2) \Omega_4 \quad (106)$$

What is remarkable for this Action 1-form is that both the mean curvature and the Adjoint curvature of the implicit hypersurface in 4D vanish, for any choice of a or b. The Gauss curvature is nonzero, positive real and is equal to the inverse square of the radius of a 4D euclidean sphere, when $a^2 = b^2$. The Adjoint cubic interaction energy density is zero. The two nonzero curvatures are pure imaginary conjugates equal to

$$\rho = \pm \sqrt{-b^2(x^2 + y^2) - a^2(z^2 + t^2)}/(r^2). \quad (107)$$

The Hopf surface is a 2D imaginary *minimal* two dimensional hyper surface in 4D and has two nonzero imaginary curvatures! Strangely enough the charge-current density is not zero, but it is proportional to the Topological Torsion vector that generates the 3 form $A \wedge F$. The topological Parity 4 form is not zero, and depends on the sign of the coefficients a and b. In other words the 'handedness' of the different 1-forms determines the orientation of the normal field with respect to the implicit surface. It is known that a process described by a vector proportional to the topological torsion vector in a domain where the topological parity is nonzero $4ba/(x^2 + y^2 + z^2 + t^2) \neq 0$ is thermodynamically irreversible.

7.3 Example 3 A repeatable experiment that demonstrates emergence

As an example that can be experimentally replicated regard the photo below. The fascinating thing to me⁷ was how, in the midst of all the turbulent irreversible dissipation (Pfaff topological dimension 4) associated with a nuclear explosion, there would emerge a topologically coherent, nonequilibrium macroscopic state that was radiating (Pfaff topological dimension 3) in the form of a toroidal topological defect. A surprising observation was that this excited nonequilibrium state had relative long lifetime.

⁷In 1957 as I stood in the Yucca Flats valley of Nevada



**Ionized toroidal topological defect
Pfaff topological dimension 3**

8 Conclusions

Based upon the single assumption that the universe is a nonequilibrium thermodynamic system of Pfaff topological dimension 4 leads to a cosmology where the universe, at present, can be approximated in terms of the nonequilibrium states of a very dilute van der Waals gas near its critical point. The stars and the galaxies are the topological defects and coherent (but not equilibrium) self-organizing structures of Pfaff topological dimension 3 formed by irreversible topological evolution in this nonequilibrium system of Pfaff topological dimension 4.

The turbulent nonequilibrium thermodynamic cosmology of a real gas near its critical point yields an explanation for:

1. The granularity of the night sky as exhibited by stars and galaxies.
2. The Newtonian law of gravitational attraction proportional to $1/r^2$.

3. The expansion of the turbulent dissipative universe.
4. The emergence of nonequilibrium (radiating) Pfaff dimension 3, topological defect structures such as stars and galaxies.
5. A possible understanding of non radiating systems (dark energy, dark matter) in terms of ordinary thermodynamic defect systems of Pfaff topological dimension less than 3. Such thermodynamic systems do not exchange matter or radiative energy with the turbulent dissipative environment of the physical cosmological vacuum.

References

- [1] Michael Atiyah: Collected Works by Michael Francis Atiyah - Mathematics - 1988 - 720 pages Page 583 - "For this we just have to recall that, intrinsically, the Higgs field is the difference between the Lie derivative and the covariant derivative along the orbit. . . "
- [2] Baldwin, P. and Kiehn, R. M. (1991) "Cartan's Topological Structure", Poster presented at the summer workshop, "Topology in Fluid Dynamics", Inst. for Th. Phy. UCSB, August 1991. arXiv math-ph/0101033, <http://www22.pair.com/csdc/pdf/topstru4.pdf>
- [3] Bamberg, p. and Sternberg, S., "A course in mathematics for students of physics, 2", (Cambridge University press, Cambridge, 1992) p. 775- 780.
- [4] Bryant, R.L., Chern, S.S., Gardner, R.B., Goldschmidt, H.L., and Griffiths, P. A. , "Exterior Differential Systems" (Springer, Verlag 1991)
- [5] Flanders, H. (1963) "Differential Forms" (Academic Press, New York) p.126. O'Neill, B. "Elementary Differential Geometry"(Academic Press, New York) p.189...
- [6] Goldenblat, I.I., "Some problems of the mechanics of continuous media", (Noordhoff, Holland 1962) p.193 "The quantity of heat in a reversible process always has an integrating factor"
- [7] <http://www22.pair.com/csdc/pdf/implinor.pdf> and
<http://www22.pair.com/csdc/pdf/parametric.pdf>
- [8] Landau, L. D. and Lifshitz, E. M., "Statistical Physics" (Pergamon Press, London 1958) p. 369.
- [9] Morse, P.M., "Thermal Physics", (Benjamin, NY, 1964) p. 60,

- [10] L. J. Mason and N. M. J. Woodhouse (1996), "Integrability, Self Duality, and Twistor Theory", Clarendon Press, Oxford.
- [11] Kondepudi, D. and Prigogine, I., "Modern Thermodynamics" (Wiley, New York, 1998)
- [12] Kiehn, R.M. (1991) "Continuous Topological Evolution", LANL arXiv/math-ph/0101032 (<http://www22.pair.com/csdsc/pdf/contevol3.pdf>)
- [13] Kiehn, R. M. (2003), "Thermodynamic Irreversibility and the Arrow of Time" in R. Bucher et al. (eds.), The Nature of Time: Geometry, Physics and Perception, 243-250. (<http://www22.pair.com/csdsc/pdf/arwfinal.pdf>)
- [14] Kiehn, R. M., "A topological perspective of Electromagnetism", in "Classical electrodynamics: new horizons", Editors Andrew E. Chubykalo and Roman Smirnov-Rueda, Rinton Press, Inc. (USA). Also see <http://www22.pair.com/csdsc/pdf/rmktop.pdf>
- [15] Kiehn, R.M. (1977), Periods on manifolds, quantization and gauge, J. Math Phy. 18, 614. (<http://www22.pair.com/csdsc/pdf/periods.pdf>)
- [16] Kiehn, R. M., (1987) The Falaco Effect as a topological defect was first noticed by the present author in the swimming pool of an old MIT friend, during a visit in Rio de Janeiro, at the time of Halley's comet, March 1986. The concept was presented at the Austin Meeting of Dynamic Days in Austin, January 1987, and caused some interest among the resident topologists. The easily reproduced experiment added to the credence of topological defects in fluids. It is now perceived that this topological phenomena is universal, and will appear at all levels from the microscopic to the galactic. LANL arXiv/gr-qc/0101098 (<http://www22.pair.com/csdsc/pdf/falaco97.pdf>)
- [17] Kiehn, R.M. and Pierce, J. F., (1969) "An Intrinsic Transport Theorem." Phys. Fluids, 12, p.1971. (<http://www22.pair.com/csdsc/pdf/inttrans.pdf>)
- [18] Kiehn, R.M. (1999), Topological evolution of classical electromagnetic fields and the photon, in, "Photon and Poincaré Group", V. Dvoeglazov (ed.), Nova Science Publishers, Inc., Commack, New York, p.246-262. ISBN 1-56072-718-7. Also see (<http://www22.pair.com/csdsc/pdf/photon5.pdf>)
- [19] Kiehn, R. M. (2003) Falaco Solitons - Cosmic Strings in a Swimming Pool, presented at the Bilbao COSLAB conference June 10, 2003. <http://www22.pair.com/csdsc/pdf/coslab.pdf>

- [20] Kiehn, R. M. (2003) A Topological Perspective of Cosmology, presented at Vigier IV conference in Paris, September, 2003.
- [21] Kiehn, R. M. (2004) A Topological Perspective of Cosmology, in "Relativity, Gravitation, Cosmology" Edited by Valeri V. Dvoeglazov and Augusto A. Espinoza Garrido. Nova Science Publications, Inc., New York, USA, 2004, p.163 Also see <http://www22.pair.com/csdc/pdf/cosmos.pdf>
- [22] R. M. Kiehn (2006), A topological theory of the Physical Vacuum, gr-qc/0206118
- [23] Tornkvist, O. and Schroeder, E., (1997) "Vortex dynamics in Dissipative Systems", Phys Rev. Lett. 78, 10 , p. 1908-1911.
- [24] Kiehn, R. M. (2004) Non Equilibrium Thermodynamics, "Non Equilibrium Systems and Irreversible Processes Vol 1" see <http://www.lulu.com/kiehn>
- [25] Kiehn, R. M. (2004) Cosmology, Falaco Solitons and the Arrow of Time, "Non Equilibrium Systems and Irreversible Processes Vol 2" see <http://www.lulu.com/kiehn>
- [26] Kiehn, R. M. (2004) Wakes, Coherent Structures and Turbulence, "Non Equilibrium Systems and Irreversible Processes Vol 3" see <http://www.lulu.com/kiehn>
- [27] Kiehn, R. M. (2004) Plasmas and Non equilibrium Electrodynamics, "Non Equilibrium Systems and Irreversible Processes Vol 4" see <http://www.lulu.com/kiehn>
- [28] Volovik, G. E., "The Universe in a Helium droplet", (Claredon Press, Oxford, 2003)